

# NOW NEXT

EXPERIENCE



SERGE KAMPF  
LES FONTAINES

Capgemini Campus



# Campus Serge Kampf Les Fontaines

GENERAL PRESENTATION

Copyright © Capgemini 2018. All Rights Reserved

Capgemini

# WHY RUN A SEMINAR?

TO GO FROM NOW - YOUR COMPANY TODAY - TO NEXT -  
WHAT YOUR TEAM WILL MAKE OF IT TOMORROW.

To invent your future, but also to make it real,  
to build it with your own hands.





**WHY RUN  
A SEMINAR?**

**NOW  
NEXT**

**CREATE CHANGE  
BUILD COMMITMENT  
DIGITAL TRANSFORMATION  
SOLVE PROBLEMS  
BOOST BUSINESS  
TEAM BUILDING...**



At Les Fontaines,  
Capgemini created the  
**CAMPUS** that will take  
your company  
from **NOW** to **NEXT**






 **IACC**  
CERTIFIED VENUE

Les Fontaines, more than a CHÂTEAU: **A CAMPUS**, recognized by the IACC.

A Net-age Forum with leading-edge infrastructure and meeting facilities for 10 to 500, including the European eco-label, Hermès-style seats and Capgemini's Collaborative Business Experience, 300 bedrooms in 52 hectares of private forest, a fitness center with pool, tennis... and a bright future for your company.

Don't forget your bathing suit. Nor your imagination.





At Les Fontaines,  
Capgemini created the  
**EXPERIENCE** that will take  
you from **NOW** to **NEXT**





- / a **campus** experience
- / a **meeting** experience
- / a **guest** experience
- / a **Capgemini collaborative** business experience
- / an **event** experience



# The **CAMPUS**



**BUILT BY THE ROTHSCHILDS FOR PLEASURE,  
USED BY THE JESUITS TO STUDY,  
REINVENTED BY CAPGEMINI FOR BOTH.**

**DESIGNED BY THE LANDSCAPE ARCHITECT BERTHAUD** in the late 18th century, the northern part of the park - surrounding the lake - was planned as an English Garden adorned with small factories.

**WITH THE ROTHSCHILDS**, in the late 19th century, the Domain acquired its present size (52 hectares/130 acres), its diverse landscape and its Château, an architectural "folly" built around a metal structure similar to that of the Eiffel Tower.

**MADE FAMOUS BY THE SOCIETY OF JESUS** in the 20th century, the Les Fontaines' Cultural Center was patronized by many representatives of the international civil and spiritual society.

Reconstructed by the Capgemini Group in the early 21st century, the Campus Les Fontaines, in continuity with its previous owners, pursues the same goal:

To federate talent, facilitate multidisciplinary exchanges, stimulate initiatives across the world.

**TODAY, LES FONTAINES CONTINUES TWO CENTURIES OF INTELLECTUAL PURSUITS:  
"Il est des lieux où souffle l'esprit"**



# A UNIQUE PLACE, MANY POSSIBILITIES



52 HECTARES OF  
PRIVATE GROUNDS

FULLY  
SECURED SITE

More than a château, more than a congress center, more than a hotel:

*A campus, an experience, a diversity of universes, all built-in.*

From inside to outdoors, from Forum to "Ferme Normande", from modular lofts to château lounges, from tennis to touch screens... An exclusive design, and eco-responsibility.

- R** Reception / Réception
- P** Access to Car Park / Accès parking
- S** Car Park for pedestrians / Accès parking pour piétons
- L** Access for goods / Voie logistique
- Q** Goods delivery / Quai livraisons



# CAPACITY



**300**

**GUEST ROOMS**  
in 7 villas in the heart  
of the park



**60**

**MEETING ROOMS**  
from 5 to 115 people



**450**

**SEAT AUDITORIUM**  
Hermès-designed



**800**

**PEOPLE**  
in cocktail setting



**500**

**PEOPLE SERVED**  
in the Château



**4**

**PRIVATE LOUNGES**  
in the Château



**300**

**CARS PARKED**  
in underground parking



**52**

**HECTARES PARK**  
woods, meadows and lake

# MEETING SPACES

/ All meeting rooms are bathed in **natural daylight**.

/ All are fully **tech-equipped**: Very High Density no log-in Wi-Fi, a video projector, a PC with a DVD player...

/ **60"** screen in every room, many are touch screens

/ **Microsoft Surface Hubs**

/ Rooms can be configured to host any type of event: training sessions, workshops, breakout groups, conferences, etc.)

/ All meeting spaces can be **privatized**.



# 60

**MEETING ROOMS**  
from 5 to 115 people



# THE 450-SEAT AUDITORIUM

**THE AUDITORIUM, WITH ITS INTEGRATED HIGH-TECH EQUIPMENT:  
THE BEST SCENOGRAPHY FOR YOUR PLENARY SESSIONS.**

/ Integrated control system with three video projectors - 21m wide cinemascope image - and access to the latest generation of projection and sound solutions

/ Interpretation booths

/ 120 sq. m. stage that can showcase a variety of presentations and scenographies

/ Hermès-designed soft-leather seats



# 450

**AUDITORIUM**  
with 450 seats

# LES ATELIERS

## LIGHT-FILLED LOFTS FLOATING ABOVE THE YARD

/ Each with a 100sq.m private terrace

/ Adjustable in various configurations





# LA FERME NORMANDE

## HIDDEN IN THE PARK, A SURPRISING SEASIDE VILLA IN THE GREEN

/ "The Normandy Farm": A singular place built by Baroness de Rothschild to replicate a Normandy seaside villa

/ A space for relaxation, work or dining, in a quiet bucolic setting

/ A plenary room that holds up to 50 people and 5 sub-commission rooms

/ Can accommodate up to 70 people for a countryside meal



# THE TECH: COLLABORATIVE & CUTTING-EDGE

## HARNESSING CAPGEMINI'S MULTIMEDIA AND TECH SAVVY...

- / a hardware infrastructure, fully transparent plug-and-play software philosophy:
- connected screens in all meeting rooms
- touch screens and video projection
- Microsoft Surface Hubs
- a guest App with direct access to services and premise map
- full multimedia in the auditorium, from 21m wide cinemascope screen to surround sound
- a High Density WiFi backbone freely accessible

## ... TO CREATE A COLLABORATIVE BUSINESS EXPERIENCE

- / from simple videoconferencing to fully hybrid events,
- / widen your audience with modular formats (WebTV, webcast, VR...)
- / enhance interactivity in any size group: generate, record and extend change





# SPACES FOR SOCIAL INTERACTION

## THE ROTHSCHILD CHÂTEAU

Restored to its original design, the Château, can accommodate up to 300 guests in its rooms and comprises:

/ The dining rooms

/ The private reception rooms including:

- The Boardroom
- The private dining room
- The private lounge

## CATERING FOR ALL TASTES

A flexible and dynamic offer, combining the best of nutrition and gastronomy, minimizing the impact on the environment with particular attention paid to the origin and the quality of products used, as well as to the packages and containers.



# 500

PEOPLE SERVED  
in the Château

# THE RECEPTION ROOMS

THE ROTHSCHILD CHÂTEAU INCLUDES AN EXECUTIVE CORNER AND 4 LOUNGES, EACH WITH A DISTINCTIVE ATMOSPHERE:

- / the Bar,
- / the Salon Lounge with its grand piano,
- / an English-style Lounge
- / and the Winter Garden of the Baroness



# 4

**PRIVATE LOUNGES**  
in the Château



# 300 ECO-ROOMS IN THE FOREST

7 "VILLAS" HOLD 300 ECO-ROOMS, CAMPUS-STYLE DESIGN,  
WITHIN LES FONTAINES PRIVATE FOREST

- / Italian design, with minimalist chic
- / geothermal heating and cooling system
- / eco-design and traceability
- / Wi-Fi, flat screen TV, safe ...
- / 5 suites, 23 superior rooms, 272 classic rooms
- / bird songs and pure forest silence



# 300

**GUEST ROOMS**  
in 7 villas in the heart  
of the Park

# POOL, TENNIS, FITNESS AND WELL-BEING

Les Fontaines offers complete health and fitness facilities that contribute to guests' well-being, including:

- / A wellness center with:
  - an indoor swimming pool
  - a steam room and a sauna
  - a fully equipped fitness room,
- / 2 tennis courts,
- / a pétanque ground,
- / a soccer and rugby field,
- / a fitness trail,
- / 52 hectares of private château grounds that allow many team-building activities



# 52

**HECTARES PARK**  
woodland park with a lake



# The **EXPERIENCE**

*"There is something magic that happens at Les Fontaines.  
It's hard to tell why..."*



# THE EXPERIENCE

/ **WAKE UP** with early morning light, **GEESE** flying South,

Freshly cut grass and forest sounds

/ **WALK** from villa to the Château, on **ZEN GARDEN** gangways

/ **BREAKFAST** in the Château, overlooking the **LAKE**

/ Meetings in the **FORUM**, from light-filled **WORK** rooms

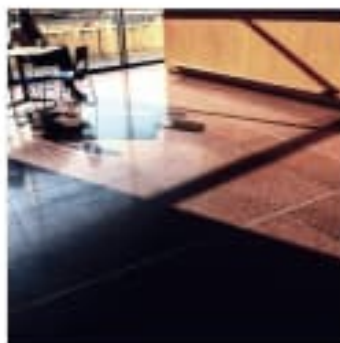
to Hermès-designed **AUDITORIUM** seats

/ **LUNCH** at the **CHÂTEAU**

/ **NOW** to **NEXT CAFÉ** always open

/ **DINNER** and events

/ Fall asleep in eco-room, in **PURE SILENCE**







# The SPECS





# ECO - PERFORMANCE

## LES FONTAINES BELIEVES THAT 'ECO-COMMITMENT' IS NOT A FANCY CORPORATE BUZZWORD

- / First European business campus to be awarded European Ecolabel status in 2008
- / Recognized as Green Star, Gold Level, by IACC
- / Certified ISO14001 by BSI
- / Geothermal energy for heating and cooling
- / Campus electricity comes 100% from renewable sources



**CAMPUS SERGE KAMPF LES FONTAINES**  
67 route de Chantilly, 60270 Gouvieux France

latitude - 49.1919554, longitude - 2.4479556

Tel : +33 (0)3 44 62 91 00  
[www.les-fontaines.com](http://www.les-fontaines.com)



## GETTING TO LES FONTAINES

25 minutes from Roissy Charles de Gaulle Airport and 45 minutes from Paris, the Campus Serge Kampf Les Fontaines is ideally located for hosting events for large international companies.

### BY CAR

- / 50 km from Paris – 45 min
- / 30 km from Roissy Charles de Gaulle – 35 min
- / 2 km from Chantilly train station – 4 min

### BY TRAIN

- / SNCF train : Paris Gare du Nord – Chantilly – 23 min
- / TGV Roissy – Charles de Gaulle





**CAMPUS SERGE KAMPF LES FONTAINES**  
67 route de Chantilly, 60270 Gouvieux France

latitude - 49.1919554, longitude - 2.4479556

Tel : +33 (0)3 44 62 91 00  
[www.les-fontaines.com](http://www.les-fontaines.com)



## GETTING TO LES FONTAINES

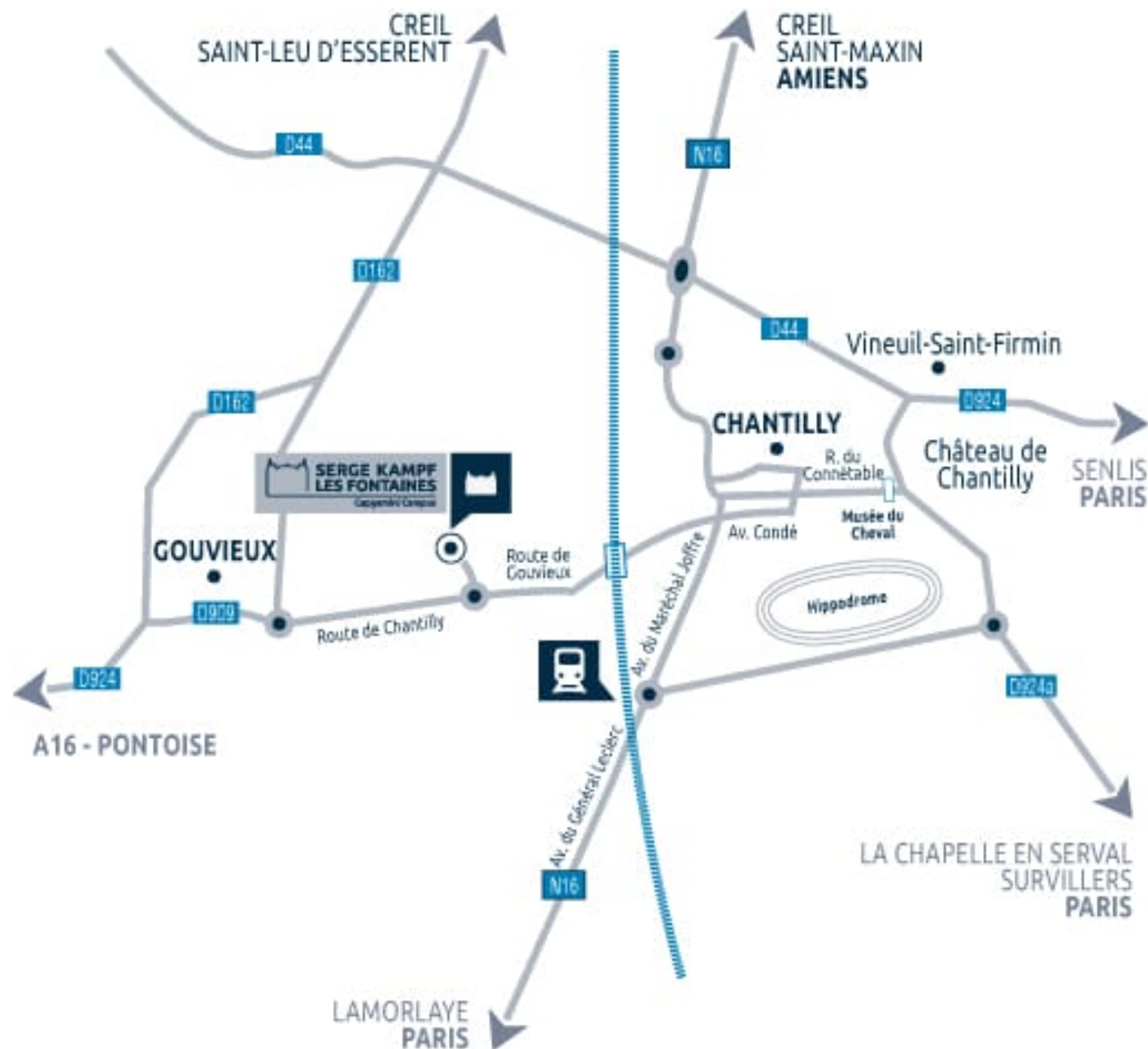
25 minutes from Roissy Charles de Gaulle Airport and 45 minutes from Paris, the Campus Serge Kampf Les Fontaines is ideally located for hosting events for large international companies.

### BY CAR

- / 50 km from Paris – 45 min
- / 30 km from Roissy Charles de Gaulle – 35 min
- / 2 km from Chantilly train station – 4 min

### BY TRAIN

- / SNCF train : Paris Gare du Nord – Chantilly – 23 min
- / TGV Roissy – Charles de Gaulle





## CAMPUS SERGE KAMPF LES FONTAINES

67 route de Chantilly,  
60270 Gouvieux

Tel : +33(0)3 44 62 91 00

contact@les-fontaines.com  
www.les-fontaines.com

**Service Commercial**  
Tel : +33 (0) 44 62 93 93  
commercial@les-fontaines.com



Retrouvez nous sur



#experiencelesfontaines